

# Highland Hug by DROPS Design

**Knitted blanket in 2 strands  
DROPS Wish or 2 strands  
DROPS Snow. The piece is  
worked in squares, with  
cables.**

DROPS 228-51

---

## SIZE:

Piece measures approx: Width =  
80 cm. Length = 120 cm.  
1 square = 40 x 40 cm.

## MATERIALS:

DROPS WISH from Garnstudio  
1000 g colour 01, off white

## Or use:

DROPS SNOW from Garnstudio  
1400 g colour 01, off white

## NEEDLES:

CIRCULAR NEEDLE SIZE 12 MM:  
Length 80 cm.  
CABLE NEEDLE – for cables.

## KNITTING TENSION:

8 stitches in width and 10 rows in  
height with stocking stitch and 2  
strands DROPS Wish or 2 strands  
DROPS Snow = 10 x 10 cm.

NOTE: Needle size is only a guide.  
If you get too many stitches on 10  
cm, change to a larger needle size.



**DROPS 228-51**

If you get too few stitches on 10 cm, change to a smaller needle size.

---

## Pattern for DROPS 228-51

---

### EXPLANATIONS FOR THE PATTERN:

---

RIDGE/GARTER STITCH (worked back and forth):

Knit all rows.

1 ridge = knit 2 rows.

PATTERN:

See diagrams A.1 to A.3. The diagrams show all rows in the pattern from the right side.

---

### START THE PIECE HERE:

---

BLANKET – SHORT OVERVIEW OF THE PIECE:

Work 6 squares (2 of each type) which are then sewn together.

SQUARE 1:

Cast on 32 stitches with circular needle size 12 mm and 2 strands DROPS Wish or 2 strands DROPS Snow or 1 strand DROPS Polaris. Work 2 RIDGES – read description above; on the last row (= wrong side) increase 6 stitches evenly spaced = 38 stitches.

Continue as follows: 2 stitches in garter stitch, A.1 (= 34 stitches), 2 stitches in garter stitch.

REMEMBER THE KNITTING TENSION!

When A.1 has been completed, work 2 ridges; on the first row decrease 6 stitches evenly spaced = 32 stitches.

Cast off.

Work 1 more square in the same way.

SQUARE 2:

Cast on 32 stitches with circular needle size 12 mm and 2 strands DROPS Wish or 2 strands DROPS Snow or 1 strand DROPS Polaris. Work 2 ridges; on the last row (= wrong side)

increase 8 stitches evenly spaced = 40 stitches. Continue as follows: 2 stitches in garter stitch, 2 stitches in stocking stitch, A.2 (= 32 stitches), 2 stitches in stocking stitch, 2 stitches in garter stitch.

Work A.2 three times in height, then work the first 4 rows 1 more time.

Work 2 ridges, on the first row decrease 8 stitches evenly spaced = 32 stitches.

Work 1 more square in the same way.

#### SQUARE 3:

Cast on 32 stitches with circular needle size 12 mm and 2 strands DROPS Wish or 2 strands DROPS Snow or 1 strand DROPS Polaris. Work 2 ridges; on the last row (= wrong side) increase 6 stitches evenly spaced = 38 stitches.

Continue as follows: 2 stitches in garter stitch, A.3 (= 34 stitches), 2 stitches in garter stitch.

Work A.3 five times in height.

Then work 2 ridges; on the first row decrease 6 stitches evenly spaced = 32 stitches.






Cast off.

Work 1 more square in the same way.

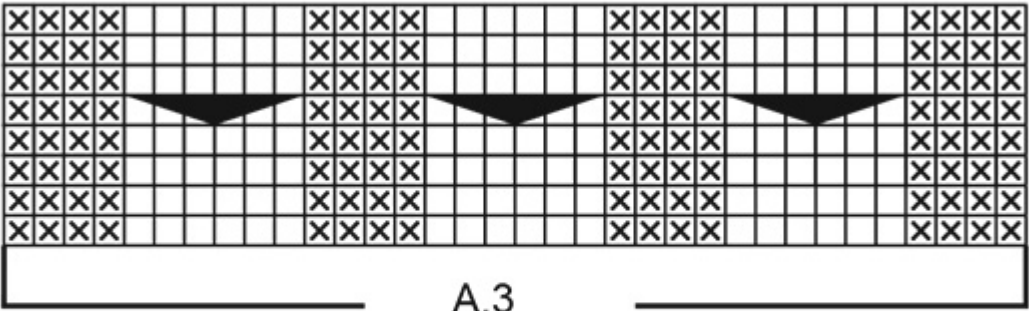
#### ASSEMBLY:

Sew the squares together in the outermost loop of the outermost stitch/row – see sketch (3 squares in width and 2 in height).

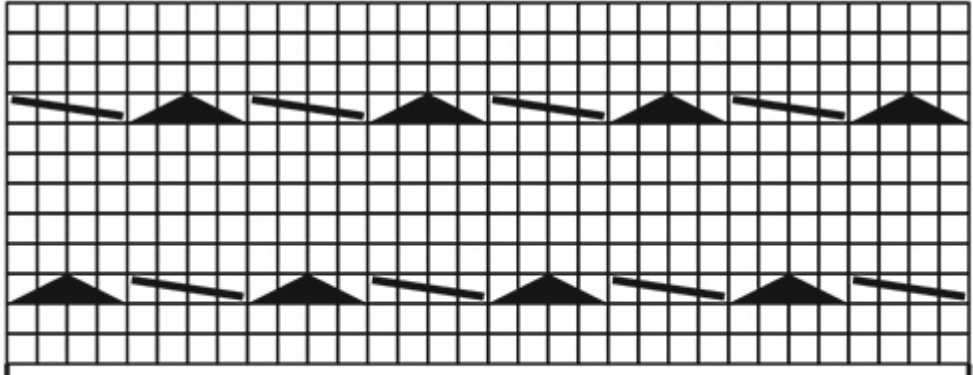
# Diagram explanations

- = knit from right side, purl from wrong side
- ⊗ = purl from right side, knit from wrong side
-  = place 3 stitches on cable needle in front of piece, purl 1, knit 3 from cable needle
-  = place 1 stitch on cable needle behind piece, knit 3, purl 1 from cable needle
-  = place 3 stitches on cable needle behind piece, knit 3, knit 3 from cable needle
-  = place 2 stitches on cable needle in front of piece, knit 2, knit 2 from cable needle
-  = place 2 stitches on cable needle behind piece, knit 2, knit 2 from cable needle
- ↑ = knitting direction when assembling

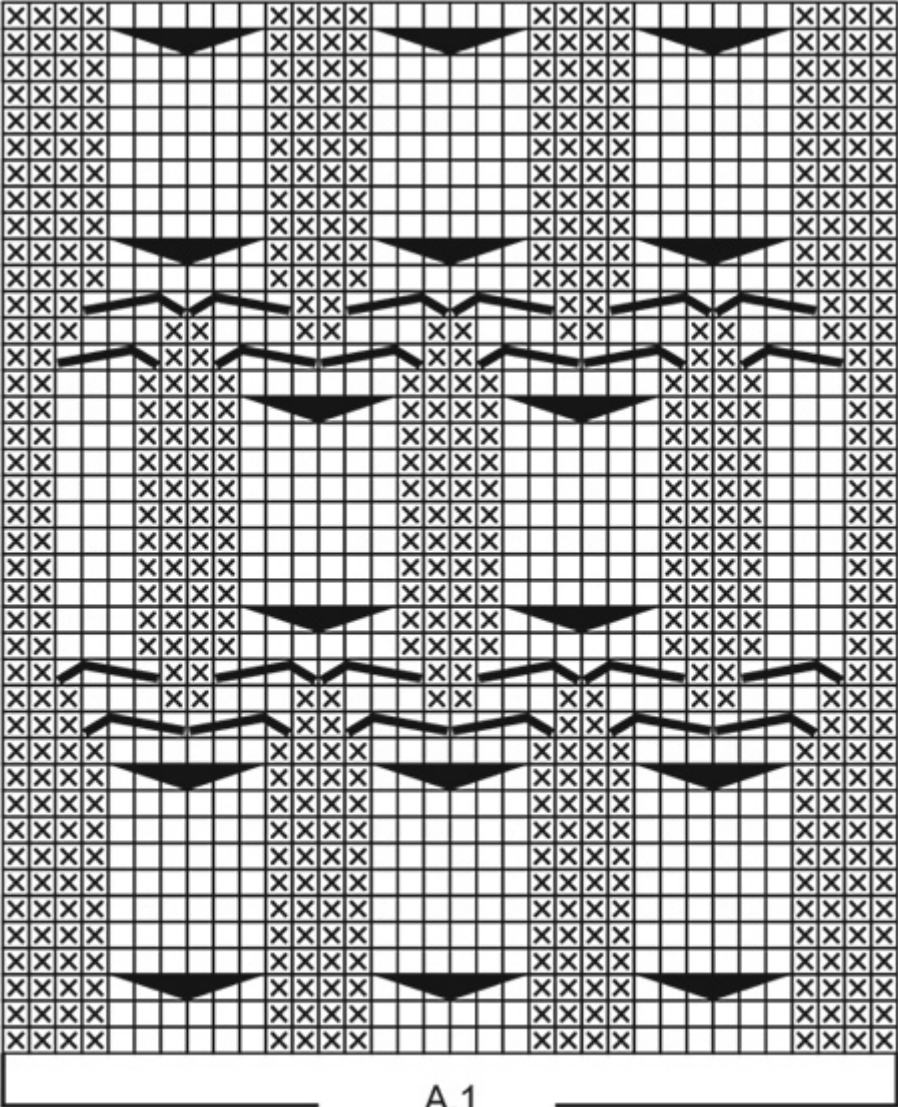
## Diagrams for DROPS 228-51



A.3  
34

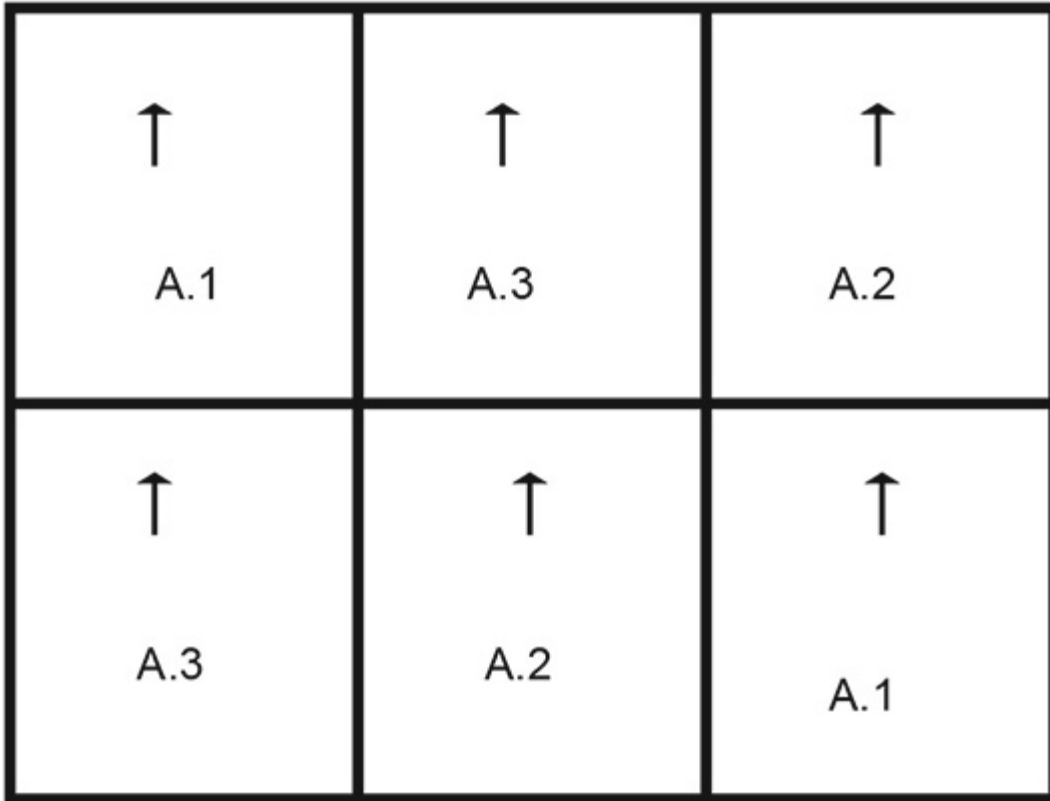


A.2  
32



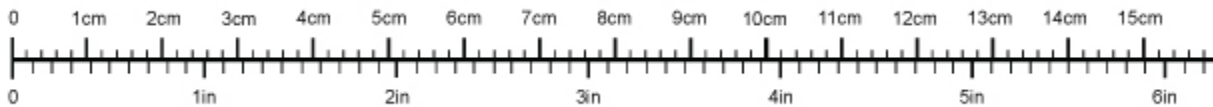
A.1

34



---

Use me to measure your project!



To get the measurement tape to be 100 % accurate, you have to print out the pattern in full scale (and not use the print option "fit to page").

---