

# DROPS Design®

*www.garnstudio.com*

## Scent of Sage by DROPS Design

**Knitted jumper in DROPS Wish. The piece is worked with cables and double neck. Sizes S - XXXL.**

DROPS Design: Pattern no wi-038  
Yarn group E or C + C

---

SIZES:  
S - M - L - XL - XXL - XXXL

MATERIALS:  
DROPS Wish from Garnstudio  
550-600-650-700-750-850 g colour 18, sage green

NEEDLES:  
CIRCULAR NEEDLE SIZE 8 MM: Length 40 cm and 80 cm.  
CIRCULAR NEEDLE SIZE 7 MM: Length 40 cm and 80 cm.  
DOUBLE POINTED NEEDLES SIZE 8 MM.  
DOUBLE POINTED NEEDLES SIZE 7 MM.  
CABLE NEEDLE.  
The technique MAGIC LOOP can be used – you then only need circular needle of 80 cm in each size.

KNITTING TENSION:  
11 stitches in width and 15 rows in height with stocking stitch  
= 10 x 10 cm.

NOTE: Needle size is only a guide. If you get too many stitches on 10 cm, change to a larger needle size. If you get too few stitches on 10 cm, change to a smaller needle size.

Magic loop – [See the technique here](#)  
Knitting tension – [See how to measure it and why here](#)  
Alternative Yarn – [See how to change yarns here](#)  
Yarn Groups A to F – [Use the same pattern and change the yarn here](#)  
Yarn usage using an alternative yarn – [Use our yarn converter here](#)



# Pattern for DROPS 226-62

---

## EXPLANATIONS FOR THE PATTERN:

---

### RIDGE/GARTER STITCH (worked back and forth):

Knit all rows.

1 ridge = knit 2 rows.

### PATTERN:

See diagrams A.1 to A.3. The diagrams show all rows in the pattern from the right side.

### DECREASE TIP (neck):

Decreasing at the beginning of the row (right shoulder):

Knit 1, slip 1 stitch as if to knit, knit 2 together and pass the slipped stitch over the knitted-together stitches.

Decreasing at the end of the row (left shoulder):

Work until there are 4 stitches left, knit 3 together, knit 1.

### INCREASE TIP (sleeves):

Work until there is 1 stitch left before the marker, 1 yarn over, knit 2 (marker sits between these 2 stitches), 1 yarn over. On the next round knit the yarn overs twisted to avoid holes. Then work the new stitches in stocking stitch.

---

## START THE PIECE HERE:

---

### JUMPER – SHORT OVERVIEW OF THE PIECE:

The back and front pieces are worked separately back and forth and bottom up, with circular needle. The sleeves are worked in the round with double pointed needles/short circular needle. The sections are sewn together, and the neck worked to finish.

### FRONT PIECE:

Cast on 74-74-82-90-98-98 stitches with circular needle size 7 mm and DROPS Wish. Purl 1 row from the wrong side. Then work as follows from the right side: 1 edge stitch in GARTER STITCH – read description above, knit 2, \* purl 2, knit 2 \*, work from \*-\* 2-2-3-4-5-5 times, work A.1 three times, then the first 4 stitches in A.1, knit 2, \* purl 2, knit 2 \*, work from \*-\* 2-2-3-4-5-5 times, 1 edge stitch in garter stitch.

Continue this rib for 10 cm.

Change to circular needle size 8 mm and work as follows from the right side: Work stocking stitch over the first 11-11-15-19-23-23 stitches, AT THE SAME TIME as you decrease 3-1-2-4-4-1 stitches evenly, purl 4, A.2, purl 4, A.3, purl 4, A.2, purl 4, stocking stitch over the last 11-11-15-19-23-23 stitches, AT THE SAME TIME as you decrease 3-1-2-4-4-1 stitches evenly = 68-72-78-82-90-96 stitches. Continue this pattern. REMEMBER THE KNITTING TENSION!

When the piece measures 37-38-39-40-41-42 cm, cast off 2 stitches at the beginning of the next 2 rows for the armholes = 64-68-74-78-86-92 stitches. Continue the pattern until the piece measures 50-52-53-55-56-58 cm. On the next row place the middle 20-22-22-24-26-26 stitches on a thread for the neck and finish each shoulder separately. Decrease as follows on each row from the right side by the neck: 2 stitches 4 times – read DECREASE TIP = 14-15-18-19-22-25 stitches on the shoulder. Work stocking stitch over the cables when there is no longer room for the cable in width.

Work until the piece measures 56-58-60-62-64-66 cm, cast off. Work the other shoulder in the same way.

#### BACK PIECE:

Cast on 56-60-68-72-80-88 stitches with circular needle size 7 mm and DROPS Wish. Purl 1 row from the wrong side. Then work as follows from the right side: 1 edge stitch in garter stitch, knit 2, \* purl 2, knit 2 \*, work from \*-\* until there is 1 stitch left, 1 edge stitch in garter stitch.

Continue this rib for 10 cm.

Change to circular needle size 8 mm. Work 1 row where you decrease 6-6-8-8-8-10 stitches evenly spaced = 50-54-60-64-72-78 stitches. Work stocking stitch over all stitches.

When the piece measures 37-38-39-40-41-42 cm, cast off 2 stitches at the beginning of the next 2 rows for the armholes = 46-50-56-60-68-74 stitches. Continue stocking stitch until the piece measures 54-56-58-60-62-64 cm. On the next row cast off the middle 16-18-18-20-22-22 stitches for the neck and finish each shoulder separately. Then cast off 1 stitch on the next row from the neck = 14-15-18-19-22-25 stitches on the shoulder. Work until the piece measures 56-58-60-62-64-66 cm, cast off. Work the other shoulder in the same way.

#### SLEEVES:

Cast on 36-40-40-44-44-48 stitches with double pointed needles/short circular needle size 7 mm and DROPS Wish. Knit 1 round, then work rib (knit 2, purl 2) in the round for 10 cm.

Change to double pointed needles size 8 mm. Knit 1 round where you decrease 4-6-4-6-4-6 stitches evenly spaced = 32-34-36-38-40-42 stitches. Insert a marker at the beginning of the round = mid-under sleeve. Work stocking stitch until the piece measures 11 cm. Now increase 1 stitch on either side of the marker – read INCREASE TIP. Increase like this every 9½-9½-9-9-8½-8 cm a total of 5 times = 42-44-46-48-50-52 stitches. Cast off when the sleeve measures 52-52-50-49-46-45 cm. Work the other sleeve in the same way as follows.

#### ASSEMBLY:

Sew the shoulder seams. Sew the side seams in the outermost loop of the outermost stitch, as far as the rib (10 cm split at the bottom). Sew in the sleeves.


#### DOUBLE NECK:

Start from the right side on the one shoulder and knit up 60 to 76 stitches around the neck (including the stitches on the thread), with short circular needle size 7 mm and DROPS Wish. The number of stitches should be divisible by 4. Work rib (knit 2, purl 2) in the round for 16 cm. Cast off. Fold the neck double to the inside and sew down. To avoid the neck being tight and rolling outwards, it is important that the seam is elastic.

## Diagram explanations

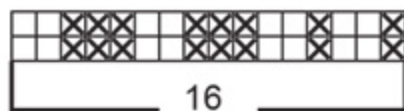
□ = knit from right side, purl from wrong side

⊗ = purl from right side, knit from wrong side

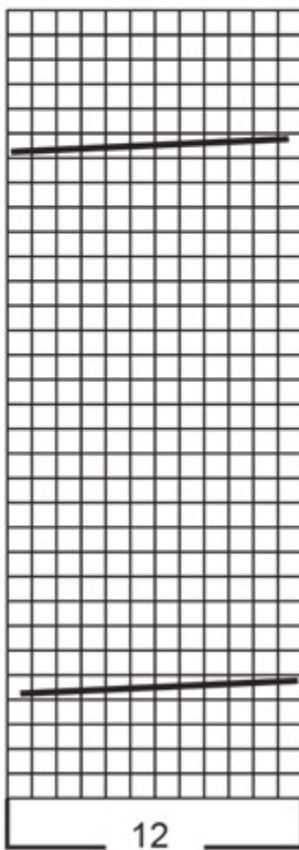
 = place 6 stitches on cable needle behind the piece, knit 6, knit 6 from cable needle

### Diagram for DROPS 226-62

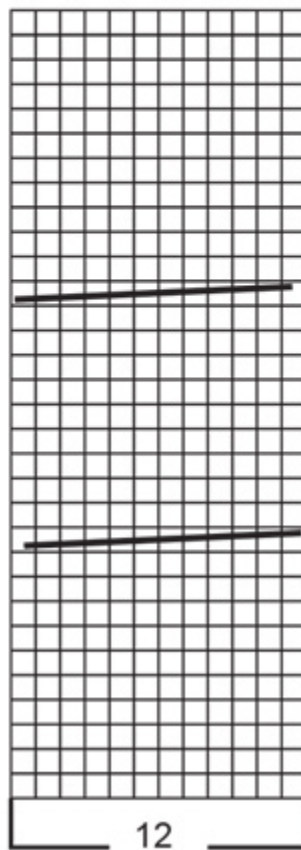
A.1



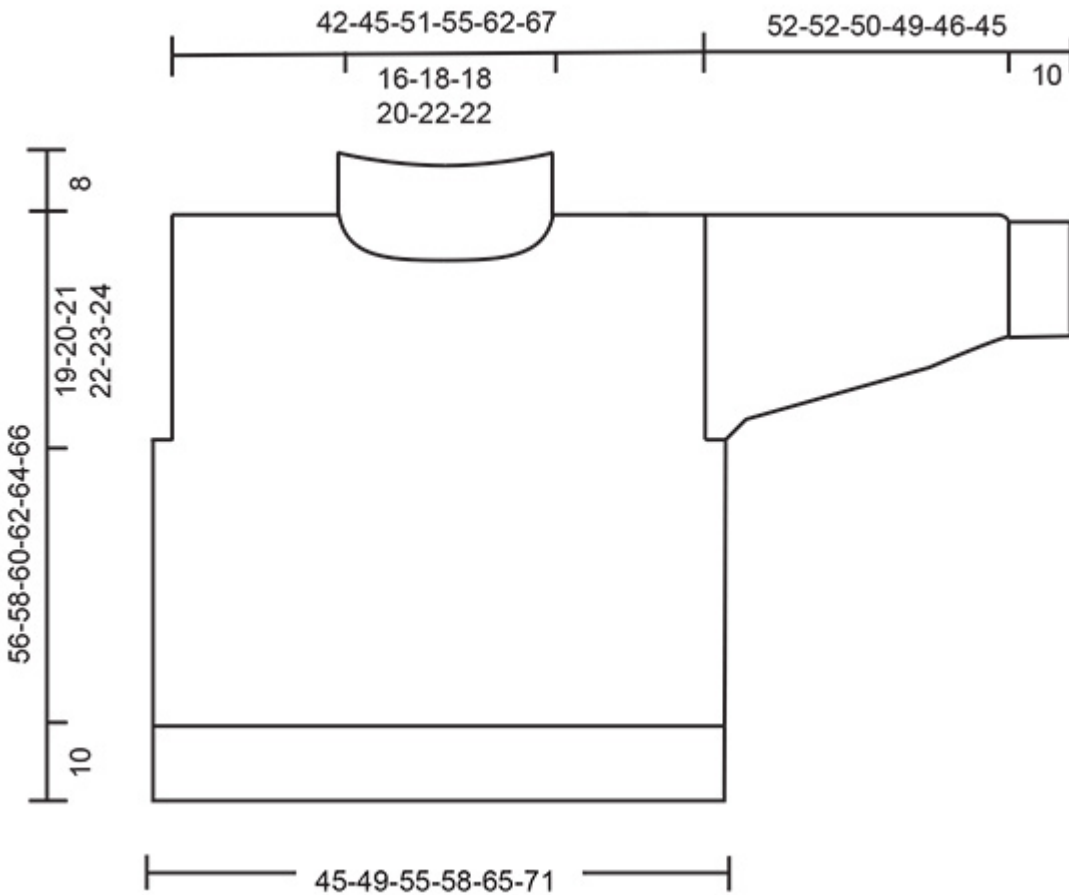
A.3



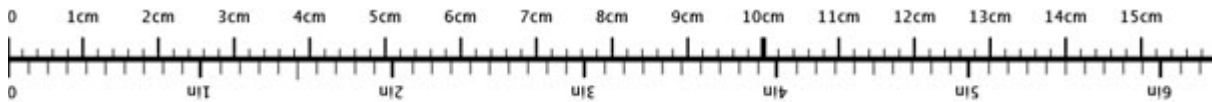
A.2



### Diagram for DROPS 226-62



## Use me to measure your project!



To get the measurement tape to be 100 % accurate, you have to print out the pattern in full scale (and not use the print option "fit to page").



© 1982-2022 DROPS Design A/S. We reserve all rights. This document, including all its sub-sections, has copyrights. Read more about what you can do with our patterns at the bottom of each pattern on our site.